

"I would like for the Nelson Mandela Bay residents, local and international tourists to embrace Route 67, to appreciate the 67 art pieces and the artists that created them. They have done a fantastic job."
 Pierre Voges - MBDA CEO

Artwork location

- 1 Way-finding Markers
- 2 Campanile Frieze
- 3 Wall of Texts
- 4 Talking Woman 1
- 5 Talking Woman 2
- 6 Talking Woman 3
- 7-16 Identities
- 17 Pool of Words
- 18 Bus Station Mural
- 19-28 Red Location Pieces
- 29 FishBone
- 30 Conversations with the Queen
- 31 Vuyisile Mini
- 32 76 Youth
- 33 Chapel Street Crossing
- 34 Tower Sculpture
- 35 Mosaic Stairs
- 36 34 Lights
- 37 Amphitheatre Wall
- 38 Election Queue (votes of the future)
- 39 Whites Road Wall
- 40 Fish Bird
- 41 Piazza Mosaic
- 42 Great Flag
- 43 Voting Line
- 44 Windward
- 45 River Memory
- 46 Untitled
- 47 Welcome Carpet
- 48 Mosaic Moments
- 49 Garden
- 50 Harmony in Nature
- 51 The Seated Couple
- 52 Athenæum Collection
- 53 artEC Mural
- 54 artEC Sculpture Courtyard
- 55 Beaded Book
- 56 Tree of Life
- 57 Constitutional Court
- 58 Trinder
- 59 Trinder Bench
- 60 Rose Street
- 61 Map
- 62 South End Glass Sculpture
- 63 Uitenhage - Untitled
- 64 Nkosi Sikelele
- 65 Children's Memorial
- 66 Guernica



ARTS / CULTURE / HERITAGE ROUTE

The Mandela Bay Development Agency (MBDA) was established in 2003 by the Nelson Mandela Bay Municipality. The MBDA has become the driving force behind urban regeneration in Nelson Mandela Bay's inner city.

Route 67 consists of 67 Public Art Works symbolising Nelson Mandela's 67 years of political life and his work dedicated to the struggle for Freedom in South Africa.

Starting at an old city icon, the Campanile Monument, the Route 67 ducks under fly-overs and climbs a staircase to Vuyisile Mini Square, the centre of the city. Then squeezing through the staircase at St Mary's, the experience of the route erupts in a celebration of colour, art and heritage that meanders up the Donkin to the great flag at the top of the hill. From here the journey continues along the old streets of the city past art galleries and parks to the culminate at the Nelson Mandela Metropolitan Art Museum. Route 67 also reaches further, linking the journey in Uitenhage, South End and The Red Location Precinct.



ARTS CULTURE HERITAGE ROUTE
 Art Map



1 WAY FINDING MARKERS

The Wayfinding Markers start at the Campanile monument and follow the Arts Journey through the city and the Donkin Reserve to the Nelson Mandela Metropolitan Museum.



2 CAMPANILE FRIEZE

Mkhonto Gwazala

A celebration of the indigenous heritage of the Nelson Mandela Bay and Eastern Cape area is sculpted through visual images set into a cast concrete curved beam.



3 WALL OF TEXTS

Mkhonto Gwazala

A written flow-poem engraved onto locally-sourced granite accompanies the Campanile Frieze and celebrates the indigenous and locally born contribution to arts and culture.



4 TALKING WOMEN 1

Lorinda Pretorius

This work bears eloquent witness to the ongoing painful struggle of rural communities dealing with the AIDS epidemic. It is a lament for the dead, for the injustices of our health system and the staggering grief experienced in Eastern Cape villages today.

*** Please note: Artworks 4,5,6 have been relocated. They will be housed in the newly developed Tramways building once the development is completed.*

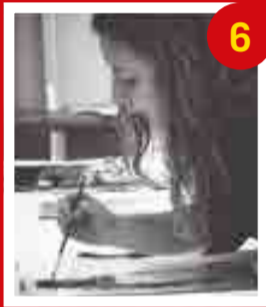


5 TALKING WOMEN 2

Nompumezo Gubevu

Using colour glass, oxides and powders this female figure was created as a symbol of what women have that unites them rather than what divides them.

*** Please note: Artworks 4,5,6 have been relocated. They will be housed in the newly developed Tramways building once the development is completed.*



6 TALKING WOMEN 3

Anver Chalzani

Maps from different times in Port Elizabeth's History illustrate how people have been instrumental in the changing landscape. This is contained within the Woman's body, making her a vehicle for the idea that many generations have lived and died in this area.

*** Please note: Artworks 4,5,6 have been relocated. They will be housed in the newly developed Tramways building once the development is completed.*



7-16 IDENTITIES

Lubhi Mtshali

A series of colourful and evocative portraits that depict young South Africans from a range of cultural backgrounds are installed on the pillars underneath the Settlers Way flyovers.



17 WALK OF WORDS

by a collective of crafters

A collaboration of artists used value words in different languages to represent the New South Africa and it's prosperity as a democratic nation.



18 BUS STATION MURAL

4BlindMice

This mural is a carefully constructed design that celebrates public transport and the daily journeys undertaken by the people of this city.



19-29 BANNERS LINKED TO RED LOCATION

This is a series of posters, showing 'teaser' sections of 10 of the works acquired to form the basis of the permanent collection of the new Red Location Art Gallery.



30 FISHBONE

Imbono FJA Architects

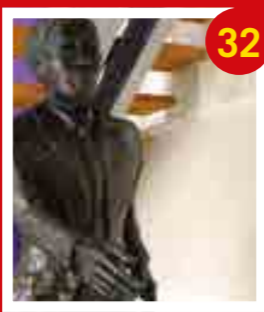
The FishBone is an architectural element intended to visually anchor the old Jetty Street to Vuyisile Mini Square and encourage pedestrians to trace a historical path between the city and the harbour.



31 CONVERSATIONS WITH THE QUEEN

NMMU Sculpture Collective

It is 1956 to 1965 and Nelson Mandela, Govan Mbeki and Raymond Mhlaba are in conversation with the Queen as Robert Sobukwe and Steve Biko look on while this three way conversation unfolds.



32 VUYISILE MINI

NMMU Sculpture Collective

This piece forms a part of Conversations with the Queen.



76 YOUTH

by a workshop collaboration

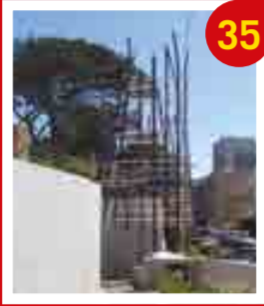
The artwork is a statement about the 76 generation and represents the spiritual journey undertaken by those who fought against oppression.



34 CHAPEL STREET CROSSING

Mthetheli Williams

A pattern of colourful paving bricks flows from all directions over the crossing in Chapel Street. This represent the gathering of masses that voted in the 1994 elections.



35 TOWER SCULPTURE

The Workplace Architects

The Tower Sculpture acts as a beacon to announce the journey through the Donkin Reserve and responds to its surrounding elements to allow wind and light to bring it to life.



36 MOSAIC STAIRS

Jane Du Rand, Nandipha Judy Mnono, Nombuso Erica Jacobs, Pumliani Kwayiyo, Zandile Bianca Snam, Mthetheli Williams, Siyolo Nkomo, Kestabelle, Bugaleleya Patrick Loli, Mkolisi Malcolm Madela, Mzwandile Matoto

The stairway is an experiential journey that starts in darkness and turbulence and progresses to a new dawn and explosion of colour, hope and new beginnings.



34 LIGHTS

Collaboration

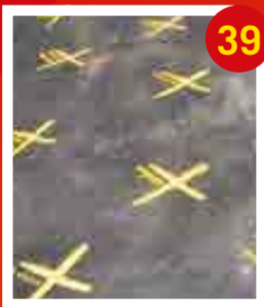
Produced as a collaboration between students and school pupils of Nelson Mandela Bay, the 34 Lights represent a journey along the Voting Queue and the Mosaic Stairs, telling a story about past, present and future.



38 AMPHITHEATRE WALL

Lemnah Chifadza, Keith Vlahakis, Paula Paton

A public art experience, where humour, vibrance and colour meet the gritty nature of everyday street life through a graphic and illustrative interpretation of Port Elizabeth's inner city ambience.



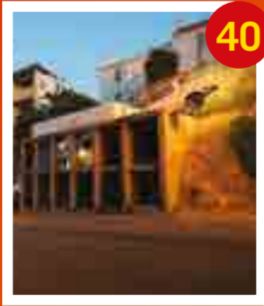
39 ELECTION QUEUE

The Workplace Architects

The Voting Queue represents the voting line that was formed at the 1994 elections.

VOTES OF THE FUTURE

A second application onto the Voting Queue path, saw over 3 000 of Nelson Mandela Bay's youth leave their mark as future voters.



40 WHITES ROAD WALL

Mark Wilby in collaboration with Bongani Njalo, Barnanya Ngxale, Jason Olivier, Gabriel Chaponda, Siya Mboniswa

History is often shaped by momentous events, while cities with their alleys, streets and avenues are formed by the layered rhythms of daily necessity. This rhythm of place, shaped by the everyday, becomes the song of the city.



41 FISH BIRD

Mkolisi Dola Sapeta

The Fish-Bird is returning back to the Donkin to take ownership of this transforming site.



42 PIAZZA MOSAIC

by the NMMU ceramic collective

This 470 square metre mosaic, situated between the Pyramid and the Great Flag celebrates the multi-cultural, the heritage, the diverse histories and abundant fauna and flora that characterises the city and the province.



43 GREAT FLAG

Trident Support

The Flag sits within the Arts Journey as a point in space that marks the Donkin Reserve as an important public space and celebration of the city's heritage.



44 VOTING LINE

Anthony Harris / Konrad Geel

The life-size laser-cut steel figures form a symbolic voting line that evokes a memory of voters as they were seen in the country's first democratic elections in 1994.



45 WINDWARD

Anthony Coke

The shapes of these sculptural benches hint at Port Elizabeth's nautical history while the title refers to the city's popular name, the "Windy City".

GRAFFITI by Black Concepts



46 RIVER MEMORY

Duncan Stewart

The artwork evokes the streamlet that once trickled down to the sea before it was land-filled, making way for what is now Donkin Street (circa 1850s).



47 UNTITLED

Anton Mombeng

The piece has been left untitled with the features and clothing on the female figure deliberately neutral, as the work is meant as a conversation piece rather than a conceptually specific entity.



48 WELCOME CARPET

Lisbet Demeyer

As its title reflects, the Quartz Carpet and bead artwork is a welcoming celebration and luxurious experience hinting at the cultural context of the Eastern Cape and leading diverse local cultures and visitors onto the Donkin Reserve.



49 LIGHTHOUSE MOSAIC MOMENTS

Nombuso Jacobs, Sinethemba Joy Mabope, Zandile Snam, Nkosoxolo Vegani, Ntombizanele Nojo Ko, Andiswa Manyata, Tiso Massa, Patrick Loli, Malcolm Madela, Siyolo Kestabelle & Jane Du Rand

The symbolic interpretation of the tiled pieces is a celebration of symbols and icons within Port Elizabeth and its surrounds, referencing various stories, personal ideas and journeys.



50 GARDEN

Patrick Watson

Garden design with indigenous plants.

Mark Joubert

Planting, save and rescue work.



51 HARMONY IN NATURE

Dominique Guillot in collaboration with Pumliani Kwayiyo, Mkolisi Malcolm Madela, Jane Du Rand & team

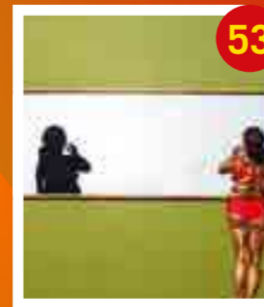
This old optical technique used by the likes of Leonardo Da Vinci and Michelangelo, is a combination of optical illusion and mathematics.



52 THE SEATED COUPLE

Nico Swart

Two minimalist figures carved from Oregon Pine are seated on high chairs overlooking the Athenaeum foyer. They welcome guests and encouraging conversation in this social space.



53 ATHENAEUM COLLECTION

Various Artists

An exhibition of large works was curated by the Athenaeum to compliment the style and grand scale of the building walls with no restrictions placed on subject matter or content. A total of six artworks were selected by artists in different stages in their careers.



54 artEC MURAL

Bongani Njalo / Gabriel Chaponda

This mural is like a mirror being held up to the residents of central and greater Port Elizabeth. It reflects the diversity of cultural, racial and ethnic backgrounds within this society.



55 artEC SCULPTURE COURTYARD

George Kockatt

The basic concept and underlying icon woven into this piece is one of waves. Waves of one kind or another tie us all together and roll onwards through history in the making of contemporary times.



56 BEADED QUOTES

a collective of bead workers

This series of artworks are a direct response by 30 beaders from the Eastern Cape to 67 quotes by Nelson Mandela over the last 67 years. Each resultant beadwork adds to a larger experience and abstracted narrative of South Africa's challenges.



57 TREE OF LIFE

Work in progress



58 CONSTITUTIONAL COURT

Work in progress



59 TRINDER

Work in progress



60 TRINDER BENCH

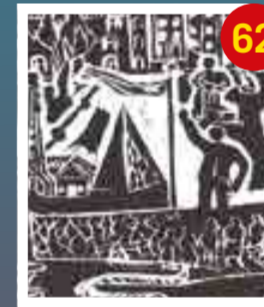
Mary Duker, Luke Lombard, Mawande Mase, Amy Verheul, NMMU alumni, students and community artists, Mellaney Rutters and Jacques Nel

The Trinder benches were conceptualised as a creative and crafted response to the roots of the wild Fig trees that grow in Trinder Square. They are arranged in an oval around the central grassed lawn where residents of the area play soccer and ball sports in the evenings.



61 ROSE STREET

Work in progress



62 MAP

Shepherd Xego

A lino cut artwork by Shepherd Xego presents his own perspective and Journey of the Route 67. Drawing on architectural features, activities and public artworks, Shepherd guides the visitor through his birds-eye imaginary experiences of the city.



63 SOUTH END GLASS SCULPTURE

Lorinda Pretorius

A sculpture created to commemorate the people who were forcefully removed from the old South End by the Group Areas Act under the Apartheid laws.



64 UITENHAGE - UNTITLED

Work In Progress

It has been proposed that a bust of Uitenhageborn composer Enoch Sontonga be installed in front of the fountains on this site.



65 NKOSI SIKELELE

The Matrix Architects

The Uitenhage Market Square features a tribute to then composer of Nkosi Sikelele 'Africa, Enoch Sontonga, who was born in Uitenhage.



66 CHILDREN'S MEMORIAL

Jane Du Rand, R.H. Godlo School, Illege School, Nomathamsanga School, Mngcunube School.

The Children's Memorial is conceptually linked to the Donkin Mosaic Moments, and through this, a subtle connection is established between these two sites.



67 GUERNICA

by community collaboration

This work bears eloquent witness to the ongoing painful struggle of rural communities dealing with the AIDS epidemic. It is a lament for the dead, for the injustices of our health system and the staggering grief experienced in Eastern Cape villages today. On show at the Red Location Museum.